



KIRAN

A ray of hope into lives

30

KIRAN
2020

ANNUAL

REPORT

2019 - 20



A ray of hope into lives

Darkness is nothing but the absence of light.

The literal meaning of KIRAN is “A ray of light”. KIRAN is the hope of dawn in the depths of night. A hope which is also a dream; the dream of a society where persons with disabilities will have equal rights and opportunities, the dream that they will be accepted for what they are without discrimination. KIRAN is striving to make this dream come true by removing the many obstacles which block our way. In this struggle against darkness, the friends and supporters have always held up a lamp to help KIRAN find the way to overcome the obstacles. Since its foundation in the early 1990s, KIRAN has brought light to thousands of lives. Over the course of almost three decades years, we have witnessed so many changes; the spark returning to so many dull, defeated eyes, as thousands of children and persons with disabilities have begun to live their dreams.

In the last year (2019-20), KIRAN continued to strive tirelessly to enable and empower communities from the most marginalised sections of society. We hope to share the joy of bringing smiles to the faces.

Vision

A world which ensures the inclusion of the differently abled and marginalized children and youth into mainstream society, where they can feel welcome, supported and empowered.

Mission

To enable differently abled and marginalized children and youth to receive rehabilitation, education and vocational training, so that they are able to take care of their social, physical and spiritual needs and thereby become fully integrated into society.



The report contains information about KIRAN Society's work and the financial report for the year 2019-20. The information in the report cannot be used in the legal matters inside or outside the jurisdiction of Varanasi, without the written consent of KIRAN Society. The information, data, photographs used in this report are the property of KIRAN Society. KIRAN Society reserves the rights to disclosure, copying, distribution and printing this report. Any unauthorized use of information available in this report will be treated under the law of land. Photographs of children are used with consent of the parents/guardians.

Executive Committee Members

Executive Committee Members Till December 2019		Executive Committee Members January 2020 onwards	
President	Dr. Neetilal Vattakunnel	President/Founder	Ms. Sangeeta J.K.
Secretary	Mr. Surendra Charan	Secretary	Dr. Kaushal Agarwal
Treasurer	Dr. Tribhuvan Chaubey	Treasurer	Dr. Rajiv Ranjan
Member/ Founder	Ms. Sangeeta J.K.	Member	Mr. Surendra Charan
Member	Dr. Madhu Kushwaha	Member	Mr. Raju Biswas
Medical Director	Dr. Moreno Toldo	Medical Director	Dr. Moreno Toldo
Member	Dr. Bharti Singh	Member	Dr. Kamaluddin Sheikh
Member	Mr. Arun Kumar Gupta	Member	Dr. Muniza Rafiq Khan
Member	Dr. Muniza Rafiq Khan	Member (Ex-officio)	Mr. Ahyan Shandilya

General Body Members

General Body Members Till December 2019		General Body Members January 2020 onwards	
Member	Prof. Akhilender Pandey	Member	Prof. Akhilender Pandey
Member	Dr. Deepmala Katiyar	Member	Dr. Deepmala Katiyar
Member	Dr. Kamaluddin Sheikh	Member	Dr. Kamaluddin Sheikh
Member	Dr. Kaushal Agarwal	Member	Dr. Kaushal Agarwal
Member	Dr. Monica Gupta	Member	Dr. Monica Gupta
Member	Dr. Muniza Rafiq Khan	Member	Dr. Madhu Kushwaha
Member	Mr. Rajan Shrivastava	Member	Mr. Rajan Shrivastava
Member	Dr. Rajiv Ranjan	Member	Dr. Rajiv Ranjan
Member	Mr. Raju Prasad	Member	Mr. Raju Prasad
Member	Mr. Shivpal Sharma	Member	Mr. Shivpal Sharma
		Member	Dr. Tribhuvan Choubey
		Member	Dr. Bharti Singh

Contents

Message from Founder and President	5
Message from Medical Director	6
Message from Executive Director	7
Key areas of Intervention	8
• Education	9
• Healthcare	15
• Inclusion	29
• Livelihood and capacity building	31
Support functions	33
Awards and recognitions	36
Partners and supporters	37
Financial report (2019–2020)	39

Message from Founder and President

Dear Friends,

It feels a bit special, to write to you about a busy year from an almost silent lockdown situation...as if looking down from a lonely hill-top on a highly populated valley. In March 2020, when the COVID-19 situation became for the first time tangible and we were put on strict lockdown, the best attitude was probably, to convince ourselves that, yes, we are in lockdown, but for sure NOT KNOCKED DOWN!

The most significant event in 2019 was surely my handing over the responsibility as Executive Director to a new person, namely Ahyan Shandilya, from Delhi, on 1st August. This has come after a long search for the right professional.

I had desired this renewal of KIRAN's management for quite some time, while being fully aware that such transition will be easy, neither for the staff nor for the new entrant. Considering being the founder and head of the organization since the beginning, 29 years ago, and that now a more professional with humanitarian aptitude leadership was needed, this invited obviously certain changes.

But I can congratulate both Ahyan and the management team for overcoming positively the hurdles of the initial transition period. One of the most important initiatives Ahyan has taken along with operation and management responsibilities, is sure to make KIRAN efforts more visible locally, in India, and abroad. The regular updates of KIRAN activities are now reaching out to hundreds of people, with good, substantial information about our services.



In this critical time, it is absolutely essential for KIRAN's future to interact with many more friends and partners, so that together we can make sure that also in the years to come, children and youth who are with a disability or from marginalized parts of society, will receive the needed support for reaching a better future.

You, dear Reader, are most welcome to join us in this effort, and even to invite your friends also to do the same. No step, no action is too small for making KIRAN known and let the universal energy work through us all to let it become in reality
a RAY OF HOPE in our world.

We all in the KIRAN Village wish you good health and positive energy.

Sangeeta J K
Founder and President, KIRAN Society

Message from Medical Director

The medical rehabilitation services have brought an impact on the life of the children and youth with disabilities in the vast area of intervention of the KIRAN Society. The detailed descriptions that follow in this annual report substantiate this statement. I'd like to particularly mention the results of the activities in the community rehabilitation area aiming to (1) early identify neurodevelopment abnormalities in the newborn and infants and immediately intervene, and (2) advocate for education and inclusion of children and youth, especially girls, with disability. However, since March 2020 the Covid-19 pandemic has substantially affected our services and is bringing an ongoing challenge for the life of the whole society, but especially the lower strata of it, the poor and the families with a disabled among them.



The scarcity of support to them by the government sector has made our emergency interventions essential for many families. The free provision of dry rations and medicines to hundreds of families, the psychological support to them, the establishment of a service by telephone of counseling and ongoing rehabilitative advices for the children on follow-up in our units has brought a substantial relief, material and psychological, to them.

This pandemic is showing to us and the whole society two facts, among others. The first is the decisive role of NGOs like KIRAN in the provision of essential services to the disabled and their families. In the context of the Indian scenario this role should be properly recognized and accordingly supported by the government. The second is the recognition of the importance, from the present time onwards, of developing a stable system of at-distance rehabilitation services through the appropriate use of technology and communication. The increased financial difficulties that the pandemic has brought at all levels of the society are prompting us to increase our efforts and refine the capacity in fundraising, for the continuation of rehabilitation and educational services to the disabled.

Dear friends and supporters, we heartily plea to you so that the quality services of KIRAN can continue and may evolve for betterment in their essential support to the underprivileged of our society. To you all goes our deep gratitude.

Dr. Moreno Toldo
Medical Director, KIRAN Society

Message from Executive Director

Greetings!

I want to express my sincere gratitude to the KIRAN Society team and supporters for entrusting me with the role of Executive Director. I would like to thank Ms. Sangeeta JK and the team for all their hard work, dedication, and commitment over the last years – and for their warm welcome.

It is with a deep sense of honour, gratitude, and responsibility that I embark on this journey with you.

Started in 1990 with some like-minded people and established in 1994, the KIRAN Society has come a long way during recent times. The year under review saw the KIRAN Society – completing just 29 years of existence.

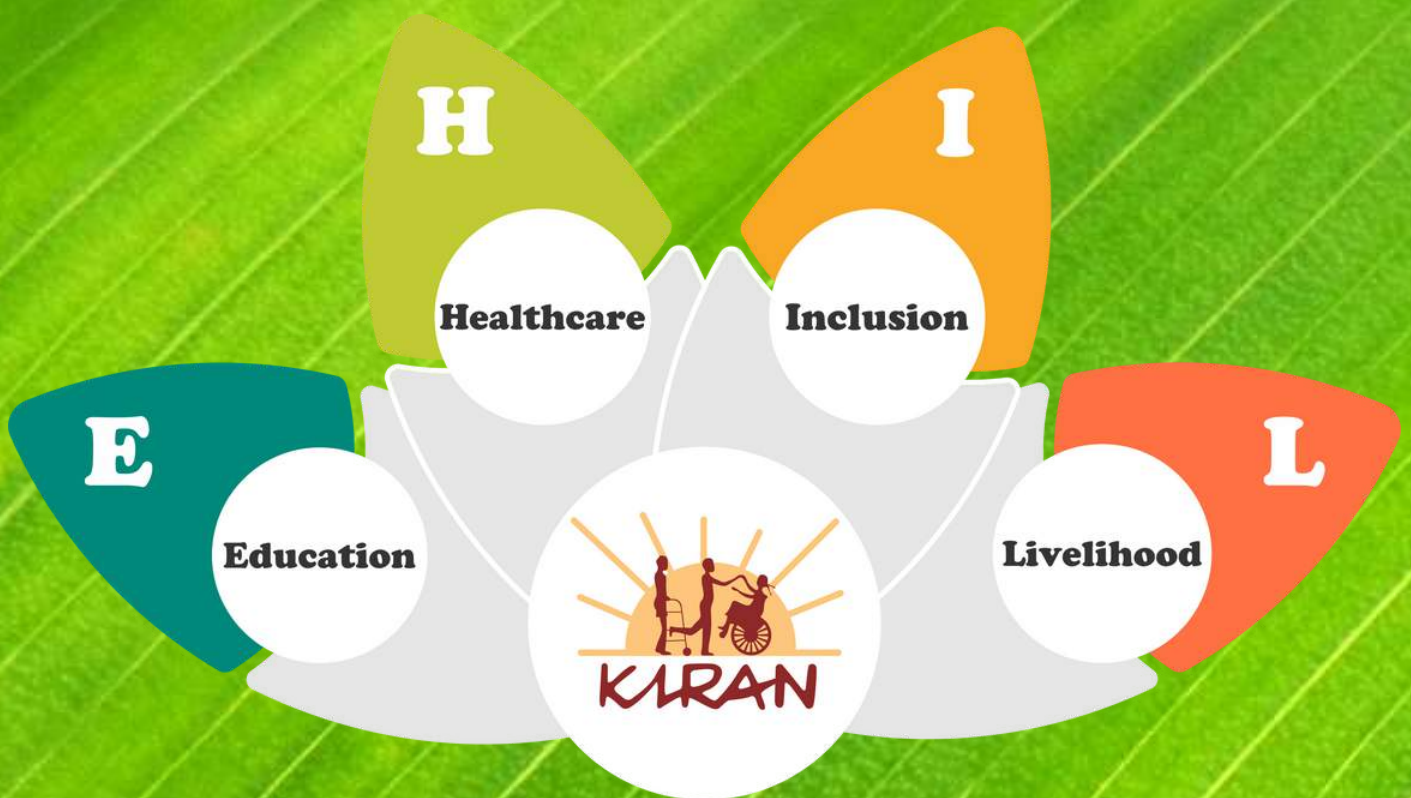
I would like to thank our dedicated team to reach out and make that difference in the lives of disadvantaged fellow communities. During this year, KIRAN Society has supported numerous rural families and children through different interventions including Inclusive education, healthcare, capacity building, and inclusive growth. The team of KIRAN gradually started making more efforts in collaboration, re-connecting and strengthening partnerships, and more action on the ground, which also witnessed the onset of the Corona pandemic. The current pandemic has only reinforced our commitment to humanitarian contributions. Together, we will navigate through today's challenging phase.

On behalf of the team, I would like to express my gratitude to all our partners and donors for their continued commitment and support.

Stay safe and healthy!

Ahyan Shandilya
Executive Director, KIRAN Society

Key areas of Intervention



Education

Education is a fundamental right for every child for social and intellectual development. The KIRAN Viklang School of KIRAN Society stands on the Right to Education (RTE), Act 2009 which enforces the concept of inclusive education by ensuring the provision of maximum learning opportunities for both children with disabilities and marginalized children of kindergarten, Primary and Upper Primary groups of Elementary Education through academic and co-curricular activities. Children with severe physical disabilities including high cognitive level are given full opportunity to complete their secondary and senior secondary education through a distance education system known as the National Institute of Open Schooling. The 11 months special educator internship program is offered to diploma holders students (Special educators) to gain practical knowledge of the teaching-learning process, in turn, they can support class teachers in handling and teaching children with disabilities in an inclusive set-up. An inclusive approach in promoting children with disabilities and other students' togetherness remained a cornerstone of KIRAN School's educational interventions, therefore reflects strongly through stage programmes, classroom activities, co-curricular activities, and awareness programmes, and disseminate the exemplary work towards inclusion.

Inclusive education

In the academic year 2019-2020, the inclusive school of KIRAN made significant efforts in accomplishing the core academic activities like -new admissions, revised syllabus, scheduled exams, and intern participation in inclusive setup. The co-curricular activities have been organized through residential summer camp, artist day twice a month, the exhibitions on the subjects of Science, Maths and Social study, drawing competition, exposure tour, festival celebration, and awareness programmes were organized. The main focus for all those events was to provide maximum opportunities to children with disabilities for equal participation in small activities. In this inclusive school set-up, a total number of 222 children including 40% of the children with different types of disabilities were studying. Out of 222 children, a total of 198 students were studying as day scholars and 24 were availing hostel facilities in KIRAN. The details of students for the academic year 2019-2020 in this inclusive school are below

Class	Male	Female	Total	Class	Students with Disability	Students without disability	Total	Type of disability	Male	Female	Total
Nursery	3	10	13	Nursery	1	12	13	Cerebral palsy	29	22	51
LKG	5	11	16	LKG	4	12	16	Intellectual disability	3	1	4
UKG	9	9	18	UKG	4	14	18	Hearing Impairment	6	10	16
I	7	11	18	I	11	7	18	Low vision	2	0	2
II	13	6	19	II	5	14	19	Locomotor disability	7	9	16
III	10	7	17	III	4	13	17	Total	47	42	89
IV	11	9	20	IV	7	13	20				
V	9	12	21	V	7	14	21				
VI	11	10	21	VI	6	15	21				
VII	8	9	17	VII	7	10	17				
VIII	17	7	24	VIII	15	9	24				
NIOS	9	9	18	IX	5	0	5				
Total	112	110	222	X	5	0	5				
				XI	1	0	1				
				XII	7	0	7				
				Total	89	133	222				

Key initiatives

Following were the key initiatives taken to improve the inclusive education services based on the previous years' learning:

- **Step by step learning various subjects:** The main three subjects Hindi, English, and Mathematics were the main emphasis for students to build a strong foundation in core subjects along with general knowledge from KG to Class II. The two new subjects Science and Social studies introduced in Class III onwards and third language Sanskrit introduced from Class VI onwards.
- **Identification of needy students for admission:** An initiative was taken by utilizing a socio-economic tool for assessing the socio-economic condition of incoming applicants for admission, so transparent and justified support could be provided to needy students.
- **Equal participation in exhibitions:** This year, the exhibitions on various topics of science, mathematics, and social studies were organized involving 120 students from Class III to Class VIII. An equal opportunity was provided to children with disabilities and other children by guiding them in preparing creative models and posters.
- **Co-curricular activities through inclusion:** Throughout the year, the Artist Day was conducted for 95 students in small groups consisting of children with and without disabilities by organizing various activities like- singing, dancing, cooking, gardening, storytelling, and role-play. In this way, all of them got the opportunity to bring out their hidden talent on a platform.
- **Inclusion of disability at an early age:** KIRAN school proved the inclusion of children with disabilities at an early age through the allocation of reserved seats in different classes for admission. This year, KIRAN school provided direct teaching in a classroom setup with other students from Class Nursery to Class XII to 89 children with disabilities covering locomotor disability, cerebral palsy, hearing impairment, intellectual disability, low vision, muscular dystrophy, and thalassemia.
- **Equal participation opportunity in the examination:** A child-friendly question paper pattern for students of kindergarten to Class VIII, and an additional time to 20 children with cerebral palsy for writing answers and provision of 5 amanuenses for writing in answers sheets for students with limited hand function proved exemplary provision of full participation in the examination of KIRAN School.
- **Involvement of ex-student as amanuensis in board examination:** The inclusive approach brought a supportive mechanism as five of the senior students supported their junior students (having limited physical functions) for appearing in secondary and senior secondary board examination by becoming their amanuensis/writers.
- **Creating teaching-learning material:** The dearth of an easy handbook with illustrations and relevant material based on classroom teaching strategy has always been noticed and as a result. KIRAN prepared a total of 7 handbooks in English and Hindi language for teachers providing their services in rural and urban areas. These handbooks describe the practical ideas and suggestions for teaching children with disabilities through an inclusive approach. This learning material was disseminated in many schools and institutions after the orientation.
- **New proposal:** A concept note which was submitted to an individual donor (Ms. Rita Lampart) was approved towards the valuable educational support of 48,000 CHF for a period of one year to Classes VI VII and VIII.

Special education

The special education services of KIRAN encompass a range of learning opportunities for children with severe disabilities, primarily with cerebral palsy, intellectual disabilities, and hearing impairment that play a vital role in the planning of their future life. The special educator maps out the appropriate strategy for each child aiming at current and future progress by involving the parents in all stages of the teaching-learning process.

Group teaching and individual need-based teaching cover the overall area of learning. Considering the dearth of hostel facilities for children with cerebral palsy and other disabilities, KIRAN fulfills the large gaps by providing hostels for both girls and boys.

In this academic year, a total of 80 students with different type of disabilities were provided special education services to mainstream them in regular learning and development process.

Type of disability	Male	Female	Total
Cerebral palsy	13	11	24
Intellectual disability	24	7	31
Hearing Impairment	17	8	25
Total	54	26	80

This year, special educators concentrated on preparing children for admission in school, vocational training, and self-employment by using various approaches and with support of their parents. Students with low cognitive level are guided individually on a hidden issue especially on awareness of their own body and safety measures.

Class/section	Male	Female	Total
Academic	9	1	10
Self-care	5	4	9
Functional Junior	4	6	10
Functional Senior	11	2	13
We can do	3	5	8
Hearing impairment KG I	7	-	7
Hearing impairment KG II	4	3	7
Hearing impairment KG III	6	5	11
Sheltered workshop	5	-	5
Total	54	26	80



Key initiatives

Following were the key initiatives taken to improve the special education services based on the previous years' learning:

- **Orientation on adolescent sexuality:** An initiative was taken to conduct basic orientation on adolescent sexuality for girls and boys with the conditions of cerebral palsy, intellectual disability, hearing impairment aiming to prevention from sexual abuse. According to age, a team of special educators developed the necessary information for guiding 75 students and their parents.
- **Sheltered workshop for adults with disabilities:** An initiative was undertaken in the KIRAN premises to support 5 young adults with limited cognitive/physical functionality and their parents for providing income-generating activity by ensuring that ultimately the program will be accelerated by parents.
- **Inclusion of students with hearing impairment:** This year, a total of 7 students with hearing impairment were given the opportunity to study with other students after discussions with school teachers and special educators.
- **Step from functional academic learning to vocational training:** Three young students with intellectual disabilities took interest in learning bakery and wood workshop activities. These students with low cognitive levels got the opportunity to prove their ability with support from their teachers.

Developing an inclusive educational environment for children with disabilities and from poor economic backgrounds

A four-year (2017-2020) project is being implemented for the improvement of the inclusive education system and infrastructure of KIRAN School supported by CSI, Luxembourg. The direct beneficiaries of the project were 300 students with disabilities and students from poor economic backgrounds from both rural and urban areas, and 30 teachers, staff of KIRAN School, and indirect beneficiaries from their parents/ guardians and family members.

Female children coupled with disability wrapped up in the vicious cycle of poverty and ignorance in such a way that it becomes difficult to think about learning and earning in the future. A well-structured girls hostel has been constructed this year for providing accommodation to at least 16 girls with disabilities, especially with cerebral palsy conditions. This year, the main focus was given with support and guidance from an internal steering committee to complete this hostel on time.

A five-day knowledge exchange programme (South-South) was organized between the Asian partners of CSI. A delegation of three members from KIRAN visited Bangladesh to more about community interventions.

Improvement of the inclusive educational environment was accelerated by using various educational materials and implementing several inclusive activities to create awareness about inclusive approaches among students, parents and the general public.

Key initiatives

Following key initiatives were taken in the projects based on the previous years' learning:

- **Steering committee:** A steering committee consisting of the management team has been created for accelerating the monitoring of CSI supported project activities especially infrastructure development and core educational activities.
- **Inception workshop:** An Inception workshop was organized by involving many stakeholders before the commencement of the project to clarify the activities, timeline, target beneficiaries, and roles and responsibilities of the different team members.
- **Lesson learned workshop:** After completion of the scheduled phase of CSI supported the project, a workshop was conducted in December month for knowing the views of stakeholders regarding the noticeably effective and lacking part of any activity in form of a lesson learned workshop. Total 45 parents, teachers, and students with and without disabilities actively discussed on given points.
- **Effective monitoring system:** Through quarterly internal evaluation of the overall project activities and expenditure against allocating budget to identify the gaps and improve it further.
- **Collaboration with other schools:** In order to expand the dimensions of inclusion, KIRAN made a move towards public awareness and sensitization by inviting 80 students from 5 schools to participate in children's day, various exhibitions, and international day for persons with disabilities at KIRAN premises.
- **New proposal:** To continue the partnership and collaboration with CSI, the KIRAN team is planning to submit a proposal for 320,000 Euros (including the KIRAN Society's contribution) for the 4 years from 2021 to 2024.

Higher education

The Human Resource Training Centre (HRTC) of KIRAN came into existence to share the technical know-how accumulated in the last 30 years of working intensively at the grass-root level with the children and youngsters having consequences of cerebral palsy.

It was realized that there is an enormous need to have well-trained professionals in the field of special education who can work with dedication and quality results with the person with disabilities.

The main focus of the HRTC is on enabling young professionals to achieve a competitive advantage in the field of special education. Further to make them realize that there is an urgent need to create a new, capable and sensitive workforce to fill this much-neglected field of special education. From its inception, the philosophy to encourage the youngsters especially females from the rural background to join this professional course.

This year a total of 48 students were enrolled and out of the 34 (71%) were females.

Out of these 48 students, 5 students were physically impairment and most of them were from economically and socially deprived families. The selection of a new batch was done by mid of July 2019 and a programme on organizational orientation (one week). The diploma students had an opportunity to participate in various workshops and get exposure to community-based services including education, health and livelihood.

Details	Number
Number of students	48
Year – I	24
Year – II	24
Female students	34
Male students	14
Reserve category	40
Unreserved category	8
Person with disability	5
Age range	19 to 30 years

There are two government apex bodies to govern this diploma course all over India. The first one is the Rehabilitation Council of India (RCI) and the second is the National Institute for the empowerment of persons with multiple disabilities (NIEPMD). The former is responsible for giving recognition and curriculum for the courses and monitoring the slandering of the course. The latter is responsible for conducting examination and awarding certificates.

Exposure and orientation to the people from other institutes	194
Person visited to the other institutes / places	116
Workshops attended by teachers' trainee	4
Intra-departmental support for workshops, trainings and seminars	5
Curriculum Transaction (theory & practical) Year – I	910 hours
Curriculum Transaction (theory & practical) Year – II	1060 hours
Recognition from Rehabilitation Council of India	5 years

Key initiatives

Following key initiatives were taken based on the previous years' learning:

- **Renewal of existing course for next 5 years:** This year in order to renew the recognition of the course and a long process of formalities was completed. The preparation initiative was started in the month of May 2019 but it took longer than expected as the scheduled inspection was carried out in the month of October 2019. It is pleased to share that the competent authorities have sanctioned the maximum duration (5 Years) recognition for this course which is given for such period only in exceptional performance.
- **Curriculum transaction:** The curriculum transaction for the diploma students was another initiative. The detailed hourly timetable and class arrangement, their transaction, and evaluation is part of an ongoing and rigorous process. As per the guidelines of RCI, completed almost 70 percent of curriculum transactions. The practical exposure to the teachers' trainees is also a crucial part of curriculum transactions. Almost 90% of time allocation for the practicals have been completed for final year students and almost 70% of time allocation for practical classes have been completed for previous year students.
- **Effective monitoring system:** Through quarterly internal evaluation of the activities to identify the gaps and improve it further.

Polyclinic services

KIRAN's Polyclinic is a registered clinical establishment recognized by Chief Medical Officer CMO of Varanasi district since 2018. The staff members comprise the Medical Director and a Nurse. Four specialist doctors are registered as consultants under the polyclinic: Dr. Kaushal Agarwal Orthopedic Surgeon, who presently is also the Secretary of Kiran Society, Dr. Monika Gupta Internist and also member of Kiran Society, Dr. Swami Varishthananda Pediatrician, and Dr. Ravi Sahai Orthopedic Surgeon. Under the umbrella of the polyclinic all rehabilitation services of Kiran are registered. Dr. Bhave a Naturopathist is present in Kiran Centre on honorary basis once a week. The polyclinic provides health services to all school students (hostellers & day scholars), trainees (hostellers & day attendants), staff members, patients who access other services in KIRAN. We give first-aid treatment and care also to the relatives of staff members living inside Kiran Village (about 100 persons) and to caretakers of patients. When clinical tests, specialists treatment and hospitalization are needed, patients are referred to other hospitals (Benares Hindu University H., Samvedna H., Ramakrishna Mission Home of Service, Smayan H.) and Diagnostic Centers (Arihant Diagnostic Centre, Prakash Lab., Dr. Poddar Neurology Clinic). With all the above clinical centres (apart from BHU) the polyclinic has an agreement for special discounts in favour of patients, with free of cost treatments for the poor. The clinical activities performed by doctor in the other units of medical rehabilitation set up are documented along with the reports of each unit. The following are the main activities run at the clinic during the year:

- The nurse conducted health check-ups of all students and trainees and referred cases with clinical conditions (mainly with eye, ear, dental and skin problems) to the doctor. Some of the patients were referred to the respective specialist for further evaluation and treatment.
- Tetanus vaccination was provided for all students of Kiran skill training courses, and MMR vaccination only for the female trainees who had not done it in childhood.
- Feeding programs were conducted for 26 children affected by disability, under nutrition and feeding difficulties. Parents were instructed how to improve feeding during meals and provided health education on proper nutrition and hygienic rules.
- Provided medicines to 20 students and hostellers girls & boys in need of regular therapy. Deworming therapy was provided twice at 6 months interval to all the school students.
- The nurse was involved in 8 Parents' trainings for health checkup and educational sessions on nutrition and hygiene of parents.
- The nurse regularly checked girls and boys hostels, the Outreach hostel for admitted patients and canteen for hygienic conditions and cleanliness. This year 81 patients were admitted in outreach hostel.
- The nurse regularly checked girls and boys hostels, the Outreach hostel for admitted patients and canteen for hygienic conditions and cleanliness. This year 81 patients were admitted in outreach hostel.

Activities	Number
Number of entrants	1401
Health check-up (school)	300
Chronic therapy for hostellers	20
Consultations in city hospitals	33
Vitamin A distributed	7
Vaccinations (Tetanus, MMR)	21
Calcium+Vit . D3 distributed	36
Deworming Therapy	308
Ferrous sulphate with Folic acid distributed	45

- Furnished First-Aid kit to all hostel in-charges and twice in a year water testing examination at BHU Community Medicine lab.
- Managing the Kiran Society's Health Welfare Fund is made available for all staff members who opt for it. It covers the expenses incurred for hospital admissions and for the ongoing expenses of a list of selected chronic diseases. This year 122 out of 168 staff members (73% of the total) have been covered by the health insurance, together with 36 spouses and 40 children. Premiums and a participation of the insured to the expenses are reviewed every year.

The department of medical rehabilitation of KIRAN society contributed to a multicentre study on early markers of clinical phenotypes and functional outcomes of 468 children with cerebral palsy. The paper was published in the Journal of Clinical Medicine 2019, 8, 1616f.

Community based rehabilitation

KIRAN's healthcare interventions include community based rehabilitation and have direct reach in around 98 villages of Sikhar, Manjhwa blocks of Mirzapur district and in Pindra and Kashi Vidyapeeth blocks of Varanasi district. KIRAN makes significant efforts to promote human inclusion by providing medical rehabilitation care, supporting the practice of inclusive education, economic strengthening for the needy and advocacy for social rights of children/persons with disabilities, women and poor people.

With the aim to carry out these benefits for target groups projects have been implemented on the key five components (Health, Education, Livelihood, Social and Empowerment) of Community Based Rehabilitation (CBR) matrix from World Health Organization (WHO). In order to provide rehabilitation services at door steps in the community, a resource centre has been developed for extremely poor children with disabilities. A team of around 25 people with diverse professional groups is dedicatedly working in this huge area in collaboration with volunteers, local supporters and civil societies for social transformation

Moving from Normal Schools to Inclusive Schools

The second-year inclusive education project has been implemented in 54 targeted villages to disseminate the concept of inclusive education in community through various sensitization and awareness-raising campaigns, training, workshops and meetings with direct and indirect stakeholders, so as to bring crucial changes in practicing and promoting inclusiveness through capacity building. The strengthening of community-based organization groups, children groups, parents' groups, and other stakeholders were key focus areas. Many positive outcomes have been achieved through under this project:

- Increased participation in activities, raising community awareness on equality, disability and education.
- Parents of children with and without disabilities started approaching the government to avail their rights and entitlements.
- Community based organizations became very active for example six members from these organization enrolled themselves as members of district level disabled people organizations. Through this, 50 person with disabilities from six different blocks of Varanasi district have associated together.

- Many children/persons with disabilities have improved in their health and functional abilities and participated actively.
- Many teachers started using teaching-learning materials and acceptance among teachers of vulnerable groups for their education has increased.
- Remedial classes at home and school for children affected by intellectual impairments played a vital role to retain them in school with support from KIRAN's special educators. .
- The accessibility were improved in five Anganwadi Centres with a variety of teaching-learning materials to prepare the children for schooling, in consent and participation of local authorities.
- Two highly sensitized government school have requested support in the development of inclusive model schools.
- Visits of Education officers of Majhwa and Sikhar blocks on their own, to better understand about KIRAN's inclusive model school and requested support.
- Strengthened the collaborative relationship with a variety of stakeholders at multiple levels.

Activities	Events	Male	Female	Total
Grass root level				
Parent meetings	25	224	926	1150
Children meetings	24	705	741	1446
Parents groups meeting	31	65	541	606
Children group meeting	40	345	411	756
Community grassroot meetings	24	354	1434	1788
CBO meetings (strengthening of groups)	12	249	123	372
Strengthening of SMC on their roles & responsibilities	13	72	208	280
Meetings - local school teachers on inclusive education	24	142	208	350
Awareness Workshop on RTE	12	220	574	794
Children with disabilities - home based education				39
Awareness Workshop on Right to Information (RTI)	12	265	523	788
District level				
Workshop with educators & rehabilitation professionals - Inclusive Education (IE) and Right to Education (RTE)	2	81	91	172
Meeting with Head of Schools on inclusive education	4			128
Exposure visits for school administrative staffs & parents on inclusive education	2			65
Training of school Teachers/ Workshops on inclusive education	2			115
International Children's Day Celebration	1			500
International Day of Persons with Disabilities	1			600
State level				
Seminar cum workshop on the Rights for Persons with Disabilities Act 2016 and Inclusive Education	1	171	106	277
Research Based Seminar on latest advancement in the field of disability and education	1			261
Dissemination of booklets & KIRAN Inclusive school through workshops at district and state level	1	74	63	137
Organizational Capacity Development				
Workshop on Advocacy strategies	1	22	31	53
Workshop on sexual Abuse & Safeguarding	1			150
Workshop on Team building, Leadership & Communication	1			170
Workshop on Project cycle management and Concept note writing	1	25	5	30
Support for building KIRAN's Enterprise Department	Capacity building of staff on packing and labelling done & production ur made advanced with machine/tools			
Resource rooms	Two resource room developed in primary schools			
Leaflet/Brochure/Poster/Information board on inclusive education	4 different type poster on inclusiv education developed and distributed in 26 schools			
Publication of success stories	5 success stories published on inclusiv education			
Release of two documentaries on importance of Inclusive education	2 documentaries released on same			

This project made a potential positive impact on schools and communities of a geographical area wider than that of the targeted villages. In the coming year, it is expected to widen and intensify through on-going efforts along with key stakeholders. Still a significant amount of work needs to be done, especially in implementing government policies and broadening the outreach of the program of inclusive education awareness and understanding.

General movements Assessment in Neonates and infants for Early intervention Social and Health support: GANESH

Early identification and intervention programs are playing a key role to improve the quality of life of infants. GANESH project has been aiming since last two years to reach out newborns and infants younger than 6 months of age in rural areas of Varanasi and Mirzapur districts with the support of government frontline rural health workers, ASHA, Aaganwadi and ANM, so that most number of the infants could be assessed and provided timely medical and rehabilitation intervention programs to mitigate the risk of neurological dysfunction in their early life. The neurological functional assessment of these infants has been carried-out through observing recorded videos of spontaneous, qualitative and quantitative general movements' pattern of infants. In the presence of an abnormal motor optimality score, a coordinated medical and physiotherapeutic early intervention follows, by specialized doctors and a group of trained community health workers and therapists.

860 infants have been assessed till March 2020 in which those infants found affected by delayed neuro-motor development mostly due to malnutrition. Many child bearing mothers have been reported malnourished and suffering from other health related issues. The identified mothers and children received medical intervention and early rehabilitation. Health awareness programs were organized in communities with audio-visual supports so as to enhance their understanding. Women from marginalized sections were trained on child care, safe delivery, importance of nutrition and hygiene.

To enhance the capacity of front-line workers a workshop on child brain development and orientation about general movement assessment was done. Many infants have returned to a normal development, because the local community health workers were following them regularly through family-mediated intervention programmes.

Activities in GANESH Project	Events	Male	Female	Total
New video recordings for assessment	-	231	219	450
Number of field medical camps and infants assessed	11	76	66	142
Number of children aged 6 to 24 months screened with Trivandrum Development Screening Checklist		40	51	91
Total number of children on regular medical and early intervention programme from April 2018				208
Number of ANM, ASHA, AWW trained on early intervention programme	16		209	209
Meetings with Primary Health Care staff	5	8	5	13
Capacity building workshops on early Intervention programme and participants	3	35	15	50



Enterprises and Empowerment (E&E)

Self Help Groups (SHG) have been instrumental to alleviating the poverty of marginalized and other vulnerable groups, such as families of children/persons with disabilities. Kiran has focused on strengthening the socioeconomic situation of marginalized women and disabled persons through forming and strengthening SHGs in Varanasi and Mirzapur districts since the last five years. During the financial year 2019-2020, following efforts were done under this initiative:

- (a) 1652 poor household women have been associated with these groups. Women have been helped in doing monthly meetings, making accounting and savings by community field workers.

Provided a common platform and explore opportunities for micro-enterprises by using the accumulated money either in groups or individually was also taken in consideration for their

- (c) economic sustainability.

To bring equality and promote the girls' education through developing leadership qualities and

- (d) decision-making capabilities in women was also focused.

Throughout the year many sensitizations, awareness, capacity building, exposure visits and

- (e) training on rights were carried-out, in small and big groups.

- (f) 1185 members have taken loans from their SHG to fulfil their financial requirements.

Women's participation in the meetings have increased significantly and 70% of SHGs are doing

- (g) monthly savings on their own.

Three SABLA organization groups (a group of 30 active women chosen within SHGs) have

- (h) been formed in the three blocks, under the patronage of these groups.

- (i) Training on small microenterprise set-ups were given to three interested SHGs.

- (j) 30 SHGs have been linked to the bank system for security and safety of money.

Few SHGs have started to distribute loans to other needy women of communities at 5% interest, which is cheaper than what is available in the community and filling the financial needs of

- (k) women; on the other hand, the accumulated amount increases the deposit of their SHG.

32 women are earning livelihoods by running small grocery shops, putting food stalls and doing flower garland activities in support of SHGs.

Activities Details	Events	Male		Female	
		(Below 18 years)	(Above 18 Years)	(Below 18 years)	(Above 18 Years)
Enterprises Exposure visit	5	0	0	15	170
Enterprises Orientation	5	0	0	11	207
SABLA Block level meeting	7	0	6	33	290
SABLA Leaders Training	9	0	0	44	424
SABLA Members exposure trip	3	0	0	12	119
SABLA members training	6	0	0	21	266
SHG Account trainings	7	0	0	30	267
SHG Leadership trainings	6	0	12	13	204
SHG Members exposure	5	0	2	23	233
SHG Network meeting	3	45	53	72	816
SHG Orientation & Formation	6	0	4	16	248
Grand Total	65	45	77	293	3354



Mainstreaming Disable and Marginalized Children through Inclusive Education, Health Promotion, Rehabilitation and Empowerment

This project has been implemented in 54 villages of Mirzapur and Varanasi districts, aiming mainstreaming of children with disabilities and marginalized children through inclusive education, health promotion, rehabilitation and empowerment for the period of three years (April 2018 to March 2021) in synergise with two other community-based rehabilitation unit's projects in same geographical area. This project is headed by inclusive education coordinator in collaboration with health coordinator, livelihood coordinator and advocacy program coordinator of CBR unit.

- 331 children (187 males and 144 females) were assessed by a team of professionals.
- Two five-days residential trainings programmes were organized for the parents of children with cerebral palsy & Intellectual disability attended by 7 children (4 Males and 3 females) with their parents.
- 14 grassroots meetings were organized at different villages of Sikhar, Manjhwa and Kashi Vidyapeeth blocks to increase awareness about different government schemes on disability, livelihood and health.
- Teaching learning materials (TLM) were developed by four field special educators for children with disabilities according their level of understanding.
- 3023 children (1269 males and 1721 females) and 33 Children with disabilities have participated in 26 meetings. In this meetings they were orientated about importance of education and involved in extra-curricular activities for their holistic development.
- 151 teachers (70 males and 79 females) and 2 person with disabilities participated in 8 meetings, in which concerns for education of children with disabilities & marginalized children were addressed.
- 65 heads of school/teachers (33 males and 32 females) participated in 2 meetings about inclusive education & educational materials.
- 125 government teachers (56 males and 50 females) and 19 persons with disabilities participated in 3 workshops about basic information about inclusive education and techniques of providing inclusive education to special children.
- A one-day awareness raising program on inclusive education was organized in Manjhwa block attended by 694 students and 82 teachers.
- 26 Health and education awareness sessions attended by 715 participants (644 males and 71 females) were held at government schools and in communities of Manjhwa, Sikhar and Kashi Vidyapeeth blocks.
- 35 sessions of street plays were organized and attended by 7429 participants on awareness creations on education at various platforms.
- 445 people (278 males and 167 females) including persons/children with disabilities participated in 12 meetings organized with community based organizations.
- 366 people (60 males and 291 females) and 15 persons with disabilities participated in 6 workshops on Right to Education (RTE).
- 430 people (61 males and 356 females) and 13 persons with disabilities participated in 9 workshops on Right to Education (RTE).
- Children's day celebration was organized on 16th November 2019 at primary school, Madhopur village, Kashi Vidyapeeth block attended by 478 school children.

- A week-long programme on the occasion of International Day of Persons with Disabilities organized at different places in project areas with different groups of beneficiaries on the theme of “Promoting the participation of persons with disabilities and their leaderships” attended by 670 people including 216 persons with disabilities.
- 3 meetings with 43 staff members of Block Resource Center were organized at different project areas.
- 5 Educational Tour/Exposure trip organized for 211 children with and without disabilities and teachers.
- At 40 different places wall paintings regarding awareness about Inclusive education were done in Manjhwa block, Mirzapur.
- Two government schools have been helped in improving facilities and 5 Aaganwadi centers made barrier free.
- 16 Meetings & awareness raising training program for 102 Aganwadi workers, 85 ASHA and 22 ANM for prevention & early detection of neurological deficits in neonates were organized.
- 13 meetings organized attended by 119 women for sensitization and mobilization about disability, health and education issues
- Home visits to 138 children with disabilities for rehabilitation services and 120 for home-based special education support.
- Exposure visit for 15 staff members to an organization (Manva Seva Kendra) based in Mirzapur district.
- A ten-day residential training programme attended by one of the staff members. Various in-house capacity building programmes were organized for staff members.



Outreach services

In outreach services, KIRAN reach out in four districts of Uttar Pradesh namely Varanasi, Mau, Gazipur, Ballia districts and similar in Kaimur district of Bihar state in coordination with local implementation partners. The main objective of this services is to reach out the neglected, isolated children in far-off villages who have any disability; and to offer them best possible quality of rehabilitation in order to improve the life-quality of such children through holistic rehabilitation approach, through physiotherapy, occupational therapy, counselling, training, aids and appliances, medical care and special education in order to guide the development of the children/persons with disability in their own socio-economic environment.

- The rehabilitation services were provided to 651 children with disabilities in community and 619 children at institutional level through organizing 31 days camp with respective local partner on pre-agreed dates.
- 28 parents of children with disabilities have trained on handling techniques to better take care of their children.
- 73 children have received residential two week long gait training and functional ability enriching programs.
- 5 children with disabilities have placed in KIRAN inclusive school for inclusive education program.
- 3 children were placed in life skill training program to earn livelihood in near future.
- Two local partners were helped to develop local resource centre to cater rehabilitation services to needy children in their own community.



Prosthetics & Orthotics services

KIRAN's prosthetics and orthotics services were provided through a long-experiences, well trained professionals. Fabrication and fitting of these devices were carried-out according the need of children with disabilities. Users feedback on its utilities and comfort were also taken consideration in order to advanced delivery of appropriated devices & bring out maximum independency of users.

A regular follow-up and check-up of devices was done through calling them in outreach rehabilitation camps and at KIRAN, wherein repair of broken or fragile part of devices were done. One dedicated day, per week for wheelchair services were given to wheelchair users to maintain highest possible mobility through training, modification and repair services. Apart from this core services, it has extended support in fabricating and modifying special wooden chair for children with disabilities to wooden workshop unit.

Orthotic team received two times technical expertise by KIRAN's long standing overseas expert collaborators, whose efforts make orthotic unit more productive and technically advanced and many children with severe deformities have got benefitted. These huge extensive services have been provided on subsidies contribution to children/persons with disabilities based on their socioeconomic assessment result.

Appliances delivered	Units
Knee Ankle Foot Orthosis	90
Ankle Foot Orthosis	278
CTEV (club foot) splint	110
Gaiter	80
Hand Splint	19
Helmet	3
Knee Brace	15
Foot Orthosis	53
Ex Ortho Prosthesis	3
Trans Tibia Prosthesis	10
Trans femoral Prosthesis	2
Hand Prosthesis	2
Total	665

Aids delivered	Units
Wheelchair	17
Rollator	19
Crutch (Axillaries & Elbow)	36
Modified Sandle	30
Total	102

Repairs and modifications	Units
Wheelchair modified	20
Wheelchair repaired	140
Calliper repaired	600
Prosthesis repaired	25
Total	785



Key initiatives taken to improve the overall services

Following key initiatives were taken in different projects/services based on the previous years' learning:

- Formation of clubs for children for conducive learning and supportive environment
- Linkages of block Community Based Organizations group linked to District level Disabled People Organizations
- Development of local resource centre to provide services near to their vicinities
- Effective monitoring system through quarterly internal evaluation of the overall project activities and expenditure against allocated budget to identify the gaps and improve it further.
- Up-scaling of staff capacity through exposure visit to enhance their understanding about inclusive education project implementation strategies for better outcome.
- Organizing State level events like workshops on Rights of Person with Disabilities Act 2016 (July 2019) and Research based seminar (December 2019)
- Developing visibility of key services through documentaries to promote inclusion, success stories, and dissemination of booklets on inclusive education.
- Improved collaborations with a diverse range of stakeholders.
- Maintained quality services for children with disabilities through interdisciplinary approach from moderate to severe level deformity and having vigorous functional limitations, provided precise modified appliances in collaboration with overseas experts.
- Timely availability of raw materials ensured through a centralized warehouse to keep raw materials safe, digitalization of stock list, monthly updating of available materials and timely placement of order & on time delivery in collaboration with procurement.
- Up-scaling of staff's clinical knowledge through group learning, case study presentation and attending workshops.
- New monthly format developed/modified on MIS system to cover the overall operations of the services.
- Collaborative mechanism improved in providing orthopaedic rehabilitation services and network meetings with implementing partners.
- Research papers are in process on enhancing early detection of neuro development disorders and provision of intervention in low-resource settings in Uttar Pradesh, India.
- Opportunities and exposure visits to the targeted beneficiaries.
- Internal evaluations in a few projects to better understand the gaps and area of improvement.
- Capacitating frontline health workers on a wide range of issues.
- A concept note for the project titled "Improving access to Right to Education and Right to Information for children with disabilities through advocacy in Pindra block of Varanasi district, Uttar Pradesh" was approved by the Embassy of Switzerland for 20,000 CHF towards the expansion of inclusive education project for the period from March 2020 to October 2020.
- The proposal on prosthetic and orthotic Intervention for the support of 12,000 CHF has been approved by the Teorema Foundation for the period April 2020 to March 2021

Institution based rehabilitation

The Institution Based Rehabilitation services of KIRAN target to optimize the functional skills of children and youth with disabilities, making it less challenging for them to cope with the various demands of their environment. The major problem for parents is to avail all rehabilitation facilities under “one roof” which is available at KIRAN Village. KIRAN has been delivering rehabilitation services to children and persons with disabilities via a team of multidisciplinary professionals. KIRAN treats children with movement disorders, speech and communication impairments, cognitive impairments and impaired social interaction, as well as a broad range of other developmental disorders. High quality services are delivered including physical therapy, special education, speech therapy, psychological and medical evaluations/interventions. The rehabilitation programme includes the screening and identification of children with disabilities, comprehensive assessments of complex individual needs, and the development of individual rehabilitation plans (IRP), all carried out by a multi-disciplinary team with the aim of maximising the potential of each child. Most of the families availing services belongs to poor socio and economical background.

Parent and child care (PCC)

Parents and Child Care serves as the entry door to KIRAN. A total of 726 children were provided services in the period between April 2019 and March 2020. PCCU has a strong track record of delivering early childhood services --neurological consultation, speech therapy, physiotherapy, psychology and early childhood education – adjusting interventions according to the different settings: home, playgroup, pre-schools and school. A trans-disciplinary approach is followed, keeping family and child at centre.

Details	New	Follow-up	Male	Female	Total
Attention Deficit - Hyperactivity Disorder	5	5	7	3	10
Autism Spectrum Disorder	6	6	12		12
Cerebral Palsy	126	209	246	88	334
CTEV	1			1	1
Delayed Speech and Language	10	8	7	11	18
Global Developmental Delay	16	9	12	13	25
Under Diagnostic Assessment	55	16	47	24	71
Down Syndrome	8	12	15	5	20
Dwarfism	1			1	1
Epilepsy	7	21	20	8	28
Hearing Impairment	35	19	33	21	54
Hydrocephalus	2	1		3	3
Intellectual Disability	42	56	69	29	98
Learning Disability	2		2		2
Complex Malformation	1	1		2	2
Mental Illness	1		1		1
Spinal Muscular Atrophy		1	1		1
Muscular Dystrophy	11	12	20	3	23
Congenital Polyneuropathy		1		1	1
Orthopaedic Deformity		2	2		2
Post-Polio Residual Paralysis		1		1	1
Psychosis	1		1		1
Spina Bifida	4	9	8	5	13
Tuberous Sclerosis		1	1		1
Neurofibromatosis		1		1	1
Spinal Spastic Paraplegia		1	1		1
Congenital Hypothyroidism		1		1	1
Grand Total	334	392	505	221	726

Services	Total
Physio and occupational therapy sessions	870
Special Education sessions	572
Speech therapy sessions	498
Psychological evaluations	252
Neurological consultations	432
Parents counselling sessions	77
Parents Training Programs organized for PCCU cases	3
Feeding Programmes	2
Two- Weeks long Intensive Therapy Programme (Number of Children)	209
Family mediated Intensive Programme (Number of families)	9

Parent's training programme

Parent Training Programme is a five-day residential program intended for parents of children with complex disabilities in need of intensive training so that they can better cope with their children at home. The priority is given to parents with poor socio-economic and educational conditions and living in remote areas. They are guided and equipped with practical knowledge on how to take care of children in activities of daily living, how to promote their functional independence maximizing their potentialities in the cognitive, communication and motor functional domains. Pre-school educational activities are taught for children having the potential to enter a school. The programme is conducted for different types of developmental disorders and disabilities like cerebral palsy, intellectual disabilities, autism, spina bifida and muscle dystrophy.



This year KIRAN successfully completed 8 parents training programmes (6 programmes for children with cerebral palsy, 2 with intellectual disabilities) involving 55 families.

Physio-occupational therapy services

Physio-Occupational Therapy team provides school-based therapy to children with disabilities or developmental delay in order to improve motor functions and support the teachers of KIRAN's inclusive school in the holistic process of all-round physical, mental and psychological growth of the students. The team attempt to integrate therapeutic intervention and strategies in harmony with scholastic curriculum.





Depending on the individual needs, a student may only require services for a specific duration.

Throughout this year, 102 students from inclusive school, special education and vocational training units had, 123 individual therapy sessions. On an average each session last for about 30 minutes, but depending on the need of child the duration of Individual session varies.

Diagnosis	Students	Activity	Children	Sessions
Cerebral palsy	81	New Assessment	15	
Post polio paralysis	6	Re-Assessment	102	
Spina bifida	5	ICF Assessment	85	
Muscular dystrophy	2	Therapy session	102	5123
Orthopedic impairment	4	Group therapy	40	10
Erb's palsy	1	Hydro- therapy	16	3
Phocomelia	1	Music therapy	48	10
Congenital polyneuropathy	1	Hippo- therapy	71	23
Torticollis	1	Case discussion	6	6
Grand Total	102	Neurological Consultations	57	15
		Classroom visits		4
		Students hostel visits		4
		Community visits	86	22
		HRTC Classes		30
		Hand Splint fabrication	5	5

Speech and audiology services

The speech therapy and audiology service deals with children affected by speech and communication impairments. The process consists of a comprehensive assessment of their speech and communication function followed by with counselling, orientation, education and treatment of the parent's development on the basis of an individualized intervention plan with the active involvement of parents.

Regular follow-ups are provided. Patients with suspect hearing loss undergo an audiometric study (Pure Tone or Behavioural Audiometry: PTA/BOA). During the period, a total of 329 new assessment, 748 follow-up assessment and 105 PTA/BOA assessment were conducted.



Psychological services

The psychologist deals with psychological disorders and neuro developmental disabilities related to problems in the sphere of cognitive, emotional, social -adaptive skills and the often associated behavioural problems. The psychologist provides assessments, screening and psychological diagnosis along with interventions such as psycho-education, parental & individual counselling and psychotherapy, cognitive training and behaviour modification.

During the period, a total of 330 new assessments and 282 follow-up interventions were conducted.



Key initiatives

Following key initiatives were taken in different projects/services based on the previous years' learning:

- **Home visits** were started to evaluate child's home environment, barriers and infrastructure.
- **Socio-economic assessment** format to understand the financial condition of the parents/families.
- **Parents' participation and feedback** in order to improve their satisfaction for services.
- Encourages the parents to **contribute for services** to widen the scope of support.
- Early intervention for children through **intense therapy sessions** with follow-up.
- **Case discussion** with respective teachers, parents and other professionals and as per needs.
- Introduced a **Management Information System** for data storage and retrieval.
- **Capacity building** of staff members through various internal and external programmes.
- **Extended technical support** to partners for mutual collaboration.
- **Improving skills** on writing concept notes and proposals.
- **Modify** training and learning material as per need
- **Development of new formats** to support in planning and monitoring for example goal sharing/planning, gait training, and unit modification.

Inclusion

Inclusion is a cross-cutting issue in most of the interventions of KIRAN but some dedicated efforts have been done to mainstream the youngsters with and without disabilities in society. The objectives of integration operationalize through:

- Providing equal opportunities and educational experience to children/youngsters with disabilities as those are provided for children/youngsters without disabilities.
- Allowing children/youngsters with disabilities and their families, neighbours, and peers to interact socially to change stereotypic responses to disability
- Creating awareness in society about the need to give persons with disabilities the possibility to live with dignity in social life.
- Encouraging youngsters with disabilities for finding training, or a job or for organizing self-employment

The session started with the process of admission and counseling of (19) out-going students with and without disability from the KIRAN School, who were successfully integrated into normal school in their nearby village/town. In addition to this, admission of youngsters who have completed their schooling and aimed to study further for educational or professional courses.

In the reporting year enrolled, a total of 16 new trainees (8 male and 8 female) with and without disability belonging from below the poverty line.

- Grihini: In this learning opportunity programme, uneducated, marginalized, and young girls with disabilities were enrolled for their better future and to gain the best way of survival. The training includes basic education, cooking, gardening, stitching skills, manner of life and beautician course, etc. There were changes made in the syllabus and study patterns like- cooking fast food, life skills, communication skills etc. At the end of February 2020, a certification examination has been conducted with the collaboration of a government certification partner – Jan Shikshan Sansthan. In the last session, twenty students have completed the course and got government-certified certificates.
- Educational and learning programmes for children/youngsters with and without disabilities: The below projects are ongoing to complete the educational requirements of youngsters with and without disabilities from the marginalized populations.
- Roche I: Started in the session 2017-18 for 9 youngsters
- Roche II: Started in the session 2018-19 for 10 youngsters
- Girl child education: Started in the session 2019-20 for 9 girls

Output

- 20 students successfully integrated in normal and special schools
- 10 students got admission for higher study in universities across the country
- 20 Grihini girls completed their course and received a skill training certificate.
- 30 job placements in different working areas like- shopping malls, schools and private organizations etc

Key initiatives

Following key initiatives were taken based on the previous years' learning:

- Contribution towards the e-rickshaw by Bharat Heavy Electrical Limited (BHEL).
- Certification for Grihini Course in collaboration with Jan Shikshan Sansthan
- The proposition of updates in the training policy of trainees for eligibility as well as increment in remuneration on the basis of their experience and dedication to the work.
- Participation by youngsters with disabilities in wheelchair race and dance on National Voters Day programme at Sigra Stadium, Varanasi
- Job placement support by V-MART, Big Bazaar, Ability Cafe, Aryan International school, and other individuals.
- Appreciation by the government and other officials for the cultural programme by youngsters with disabilities for their unique performance.
- Meeting city officials to share information on skilled trainees
- Well improved documentation by using database concept
- Monitoring system through quarterly internal evaluation of the overall activities and expenditure against allocate budget to identify the gaps and improve it further.
- Supported in organizing advocacy events like seminars and workshops
- Started a new project "Girl child education project" to fulfill the educational desires of girls with and without disability, there are 9 beneficiaries under this project.
- The Roche Foundation signed another four-year contract (2020-2024) towards a total budget of 33,000 CHF to support the education of brilliant youngsters from the poor families.



Livelihood and capacity building

The vocational skill training programme of KIRAN provides training as well as production support in various trades likes making IQ toys, carpentry, tailoring/weaving, art and design, food preservation, and bakery services to mainstream the youngsters with and without disabilities from the marginalized population in the society.

All the trainees received counseling as per the needs of various functional units and according to their specific skills. Special arrangements were made within the environment for independent functioning and mobility. Many of the trainees who joined initially they had low self-esteem and confidence level which were enhanced through learning opportunities, workshops, and other confidence-boosting activities.

The requests were received for special chairs, corner chairs, standing tables, wheelchair modification from KIRAN health and education services as well as from other institutions for the needs of the children/person with disabilities. In KIRAN Village doors, windows, and other repairing work were accomplished. In food preservation, the youngsters learn and get exposure about preparing jam, snacks and pickles.

Following were a few key capacity building and exposure activities conducted for trainees and staff members:

- In the year 2019-20, started with the admission process and done a screening of 11 trainees and selected 5 new trainees out of 12 applications
- An orientation programme was organized for all trainees in April and May 2019 helped the new trainees to adapt themselves to the atmosphere.
- A summer camp for trainees was organized in the second week of May 2019 and it was the time for the trainees to learn different things besides their regular activities.
- After the admission of new trainees, meeting with parents separately and shared with them details of the training programme as well as taken their feedback for such programmes. A second meeting with parents was also organized to share the performance of trainees.
- A get-together for staff members, picnic for trainees, celebrated various national days and festivals like Eid, Deepawali, Holi, Christmas, Independence Day, and Republic Day.
- In June 2019, three staff went for learning jewelry making in Kolkata, West Bengal organized by Sarba Shanti Ayog (SSA).
- In November 2019, organized a series of the musical festival in KIRAN café to promote products and services of youngsters with and without disabilities.
- In November 2019, staff members participated in a learning workshop on the theme of paper packaging systems in Delhi.
- In December 2019, staff members participated in a workshop organized on Product Price costing and Product Development in Delhi.

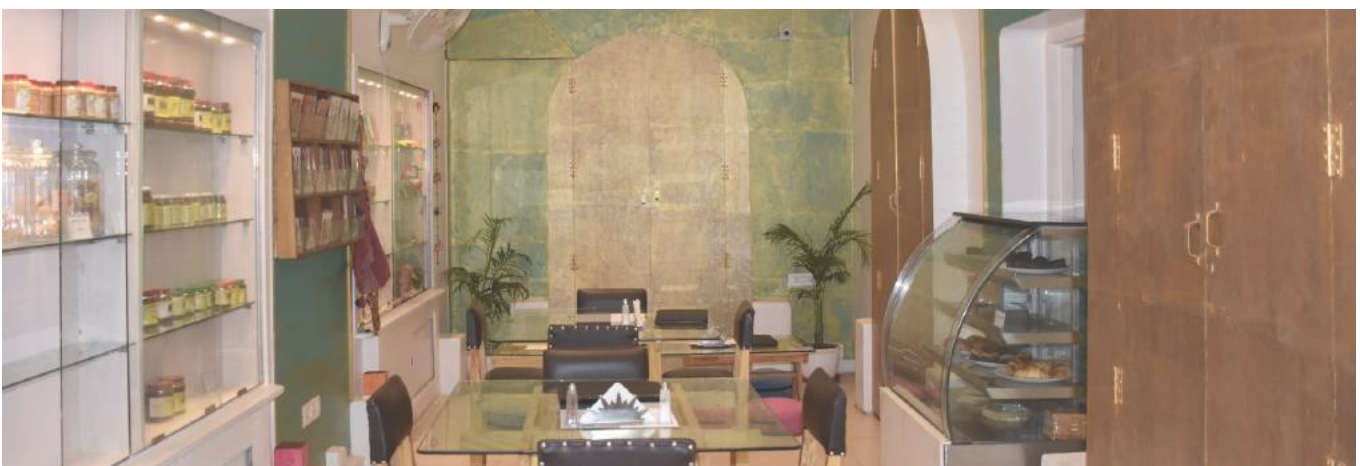
The stall to display the variety of products made by the youngsters with and without disabilities of KIRAN were done on the below venues:

- One day stall at Diamond Hotel in collaboration with Inner wheel club, Varanasi
- One day stall on the occasion of annual function at Smith School, Varanasi
- A two-day stall in Deepshika Mela at Kabir Nagar, Varanasi
- On the occasion of Deepawali, a two-day stall in TCS, Varanasi
- A two-day stall on the occasion of the annual function at DPS School, Varanasi
- A two-day stall on the occasion of the annual function at DALIMS Sunbeam, Varanasi
- One-day stall at Vasanta College, Rajghat, Varanasi
- One-day stall at Hotel Surya, Varanasi
- One three-day stall at Heritage Institute of Medical Sciences, Varanasi

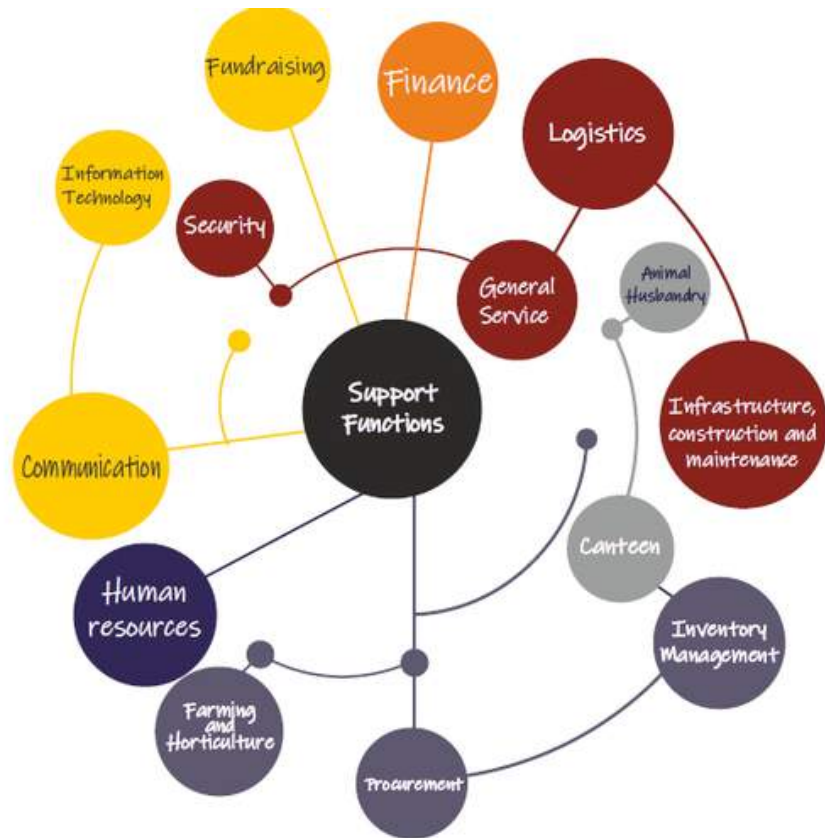
Key initiatives

Following key initiatives were taken based on the previous years' learning:

- Designed and re-evaluated the curriculum and policies of the training programme in order to attract more trainees for the future keeping in mind their needs and potentialities.
- Able to acquire support through small orders from the market and completed on time keeping on account its quality and specification.
- Customized production as per their need to increase the demand of production.
- Under training programme, first time selected two female trainees in bakery and cafe who are learning efficiently the assigned task to them and in a self-reliant way.
- Renovation of Kiran's cafe allowed it functioning properly from August 2019 onwards with positive feedbacks from supporters.
- Capacity building of staff members through various internal and external opportunities.
- Effective monitoring system through quarterly internal evaluation of the overall activities and expenditure against allocate budget to identify the gaps and improve it further.



Support functions



Fundraising

This is one of the key dedicated activities initiated recently for the future prospects in the KIRAN through three steps (1) developing and maintaining fundraising strategic plans; (2) finding potential and regular donors and (3) promoting a positive and attractive public image of KIRAN.

In the first step of identifying prospects; (a) Prospection of potential donors in the business community, in the medical community, educational community, or others (b) Link with regular donors, spreading to their family, friends.

The second step was to establish the first contact with the potential donor. Sometimes the potential donors contact directly or visit KIRAN but often interacting and meeting with people was more beneficial.

In the third step, organized PR events like the dance programme "Dance on Wheels" or other communication events. The fundraising team of KIRAN created the "Dance on Wheels" group. The performers were former students of KIRAN which conducted a total of 10 performances in addition to other events and celebrations inside and outside of KIRAN. Unfortunately, some performances were cancelled because of the COVID-19 pandemic. The articles about the group were also in print media and radio channels.

In 2019-2020, 55 new potential and regular donors were met in the first meetings belonging to educational, business, and medical communities. 99 regular meetings and 10 specific meetings in the KIRAN Café.

Initiated a specific welcoming programme for visitors in KIRAN Village, as part of this initiative 31 groups visited and witnessed the presentation about KIRAN activities. The donors also supported some of the events like children's day, Holi, Diwali, or Republic day. This year, an increase in the cash and kind donations has been noticed compared to the previous year (monthly and yearly donations). A small and new initiative, Seva-Sahyog which consists of distributing Piggy Bank (*Gullak*) to potential donors. This would be a visible artifact in a house or office to encourage visits and donations. A total of 12 donation boxes were placed in commercial institutions like hotels, saloons, and jewelry shops.

With initial months of experience, it was observed that donor relationships need continuity, loyalty, regularity and it's needed to develop and maintain it by regular meetings, sharing news, brochures, and greetings. On the other hand, various improvement has been done in developing tools and improving documentations like guidelines, new sponsorship form, new systems for reporting, compiling and analyzing data.

Volunteering

KIRAN has received volunteer support from the very beginning. It is an enriching experience for both of us in order to get to know each other's culture and the way of working.

The volunteers' support is very precious for our children as well as staff too. Their dedication towards assigned tasks was very useful and appreciable. Unfortunately due to the spreading coronavirus (COVID-19) epidemic in the entire world and lockdown in India, all activities have been affected.



But the volunteers decided to remain in the KIRAN. They have supported in other tasks i.e. in report writing, in editing newsletters, teaching the English language, and in carpentry so that they can utilize their time and skill in this crucial period.

- Pauline Magenta, is a social worker from France. She dedicated her volunteer service for a year (till November 2020). She helped in different departments of KIRAN for example in Skill Training and café, in Fundraising, and guided hostel girls in different issues
- Matteo-Zattra is a carpenter, from Italy. He is supporting in wood workshop and making different types of wooden materials i.e. special chairs, chase board, IQ toys etc..
- Sean Hannon, a young man from Ireland, has completed an undergraduate degree in Psychology. His placement was in the Education for report writing and support in the management of hostels. He came in January 2020 for five months (till May 2020)..
- Alix Lacotte, is a Product Designer from France. She is supporting KIRAN with different types of communication skills : report writing, website and social media updating, making newsletter, leaflet and so on. She has taken charge of communication with full dedication.

Canteen services

The aim of the KIRAN canteen is to provide on-time healthy, hygienic, and nutritious food to the children, staff, and guests. During the tenure, the canteen team of KIRAN provided more than 450 meals (lunch) every working day to children and staff members and to dinner for 80 hostellers boys/girls. Apart from usual requirements, collaborated well in special food arrangements in the official meetings, training programmes, workshops and various celebrations.



Communication

The KIRAN monthly newsletter has been started from October 2019. Every time, efforts have been done to improve it further and share it with relevant stakeholders. This has been very useful to share the key information of KIRAN on a regular interval and keep posted. Some changes have been done to improve the visibility of KIRAN website its visibility and organizing documents. This will be an ongoing process.

Administration

- Geberit supported the water and sanitation project, which supports water and sanitation-related activities of KIRAN Village, all planned septic tanks were constructed/renovated.
- A grant towards IT-related support has been approved from SoftwareONE, India.
- Under MIVA grant support for a minibus (50%) received from Jan Vikas Samiti, Varanasi
- Under the Lina Louise this supported project, the renovation work of Muskaan hostel has been started at the beginning of March 2020.
- Strong and flexible management of vehicles for activities, Inclusive school, special education, higher education, visitors/guests, and staff members. A regular interval checking the functioning of these vehicles.
- Regular repair/maintenance activities for the infrastructural support were going on throughout the year.
- Staff strength: 166 (1/3rd employees were female and 16% were persons with disabilities)

Management and coordination

A range of regular organizational management and coordination activities happened. A few of them listed below:

- General Body Members and Executive Committee Members meetings
- Review workshop of programmes and support functions.
- Senior leadership team meetings
- Regular management and coordination meeting with different departments
- Monthly/project reports and timely submission of donor-supported reports
- Networking and collaboration efforts
- Series of capacity building workshops for majority of the staff on different themes

Awards and recognitions

2018

Uttar Pradesh State Awarded for best leadership NGO

2017

Certified of accreditation by Credibility Alliance

2016

Guide Star India NGO Transparency Awards

2014

Lokamat Award for the Best NGO

2013

Global Commitment Towards Inclusive Education Award Uttar Pradesh

2012

Award of Best NGO by organization of understanding fraternity, India

2012

Andhra Pradesh Government awarded Prayasa Award
for the working in differently able field

2008

Andhra Pradesh Government awarded Prayasa Award
for the working in differently able field

2007-08

Best NGO awarded by National Trust

2007

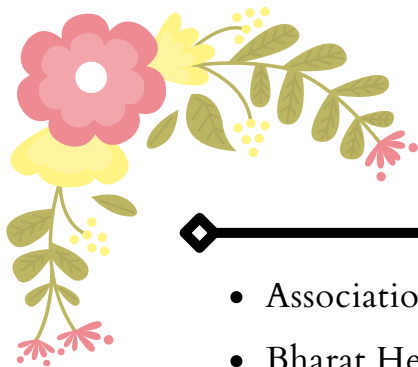
Awarded by Dr. J.E. Brandenburger Stifuting Award, from St. Gallen, Switzerland
for working in long Social Service for the differently able ones and humanitarian

2006

Ramakrishna Jaidayal Harmony Award for the Best NGO in Uttar Pradesh state

2006

Uttar Pradesh State Awarded for State wise best NGO



Partners and supporters

- Association FIDEI
- Bharat Heavy Electricals Limited
- Cerebral Palsy Alliance, Australia
- Christian Solidarity International, Luxembourg
- Cless Foundation, Germany
- Diocesi di Vicenza, Italy
- Disability and Development Partners, United Kingdom
- Give Foundation (Give India)
- General Movements Trust, Austria
- Golden Sufi Centre, United Kingdom
- Jan Vikas Samiti, Uttar Pradesh, India
- Liliane Fonds, Netherlands
- KIRAN Foundation/ KIRAN Friends Association, Switzerland
- KIRAN Friends Association, Italy
- Old POSSUM's Practical Trust (T.S. Eliot), United Kingdom
- ROCHE, Switzerland
- So Hum Foundation, United States of America
- Software ONE, India
- The Swedish Organization for Individual Relief (SOIR-IM), India
- World Child Future Foundation, Switzerland
- Kiran Mazumdar-Shaw, India
- Friends Group in Regelsbrunn, Austria
- Prof. Pinuccia Caracchi, Italy
- Mr. Laurent Condomine, France
- Mr. Hanspeter Stastny, Switzerland
- Ms. Rita Lampart, Switzerland
- Ms. Lina Louise, Switzerland

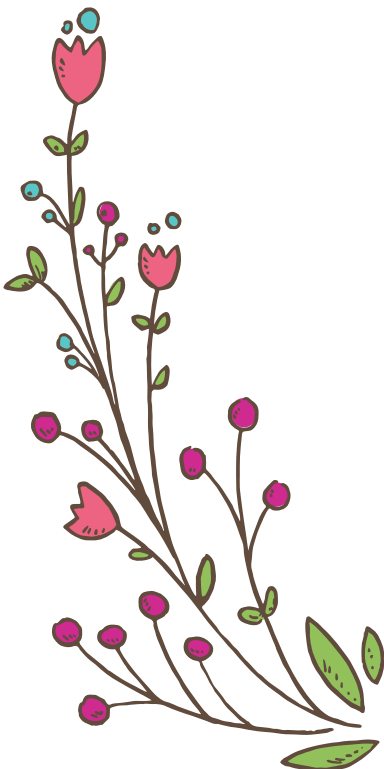


Affiliation and knowledge partners

- Rehabilitation Council of India
- National Institute for the empowerment of persons with multiple disabilities
- Motivation India, Karnataka, India
- Com DEALL, Karnataka, India
- Social Welfare Society of Varanasi Diocese, Uttar Pradesh, India
- Dr. Andrea Martinuzzi, La Nostra Famiglia Hospital, Conegliano, Italy
- Dr. Andrew Mitchell, Clinical Psychologist, United Kingdom
- Dr. Anil Pandey, Guru Nanak Home for Handicapped Children, Jharkhand, India
- Dr. Federica Nai Fovino, District Hospital of Vicenza, Italy
- Prof. Dr. Christa Einspieler, University of Graz, Austria
- Prof. Dr. V.N. Mishra, Banaras Hindu University, Uttar Pradesh, India
- Ramakrishna Mission Home of Service, Uttar Pradesh, India
- Ministry of Social Justice and Empowerment, India
- Ministry of Health and Family Welfare, India
- Dr. Corrado Squarzon, Managing Director, Eraclitus, Italy
- Dr. Ruchi Pandey, Pediatrician, Varanasi

Erstwhile patrons

- Aegis Media, Italy
- Associazione Fileo, Italy
- Bharat Heavy Electricals Limited
- Big Lottery, United Kingdom
- Buechi Foundation, Switzerland
- Guiden a scouten, Luxembourg
- Matri Shree Charitable Trust, Uttar Pradesh, India
- Pro Beatrice, Switzerland
- Wick Foundation, Switzerland



Financial Report (2019-2020)

S. TULI & Co.
CHARTERED ACCOUNTANTS,
B-HALWASIA COURT,
HAZRATGANJ,
LUCKNOW

KIRAN SOCIETY, KIRAN VILLAGE, MADHOPUR, P.O. KURUHAN, VARANASI (U.P.)

CONSOLIDATED STATEMENT OF INCOME & EXPENDITURE FOR THE YEAR ENDING 31.03.2020

EXPENDITURE		Rs.	P.	Rs.	P.	INCOME		Rs.	P.	Rs.	P.
(A) EDUCATION ASSISTANCE TO POOR CHILDREN						(A) FOREIGN CONTRIBUTION ACCOUNT					
To WELFARE OF CHILDREN						By FOREIGN DONATIONS & CONTRIBUTIONS:					
School Uniform		36,074.00				For Welfare of Physically Challenged				3,08,54,183.70	
Study Teaching Material		1,36,859.00									
Tuition Fee		28,000.00									
Scholarship		1,20,000.00									
Exposure Visit		1,67,058.00									
Student Welfare		23,205.00		5,11,196.00							
To VOCATIONAL TRAINING EXPENSES						By Donation Projects					
Raw Material for Skill Training (Carpentry, Tailoring)		1,01,190.00				Donation SOIR-IM		40,80,077.00			
Raw Material for Skill Training (Art & Design)		1,24,952.00				Karuna Project (PCCU)		15,91,309.00			
Raw Material for bakery		25,276.00				Donation CSI		11,76,857.00			
Stipends to Trainees		3,27,164.00		5,78,582.00		Donation SLF		4,75,000.00			
						ROCHE Project Income		8,71,205.00			
						Donation Ganesh Project		69,239.00			
						TSE (UK)		27,15,973.00			
						Girls Education Project		6,06,669.00			
						Orthotic Project		22,40,976.00		1,38,27,305.00	
To WELFARE OF PHYSICALLY CHALLENGED						By BANK INTEREST					
(i) Inclusive Education (Rehabilitation) Project (Soir-im)		47,77,250.35				Interest on Soir-A/c		27,244.00			
(ii) Inclusive Education Project (CSI)		55,80,923.00				Interest on Bank A/c		2,464.00			
(iii) Inclusive Development for the Children & Youngsters with Disability (SLF)		9,50,000.00				Interest on FFD		7,24,653.00			
(iv) ROCHE Project Expenses		4,02,932.00				Interest on FDR		1,06,855.00		8,61,216.00	
(v) TSE (UK)		28,04,498.00									
(vi) KIRAN (E & E)		2,04,794.00									
(vii) Ganesh Project (GM Trust)		3,87,677.00				By Medical Fund				3,87,596.00	
(viii) Girls Education Project		1,23,533.00									
(ix) Karuna Project		15,91,309.00									
(x) Orthotic Project		21,49,772.00									
(xi) Advocacy Project (Swiss Embassy)		51,240.00		1,90,23,928.35							
To Medical Fund Expenses											
										10,54,185.00	
To KIRAN BAL VIKLANG SCHOOL											
Advertisement		2,655.00									
Affiliation Fees		21,000.00									
Bank Charges		27,369.84									
Provident Fund Employer Contribution		21,02,811.00									
Provident Fund Administrative Charges		3,94,932.00									
Remuneration		13,85,133.00									
Gratuity Expenses		9,19,786.00									
Salaries		2,25,90,273.00									
Accidental & cash Insurance		2,124.00									
Staff Welfare		3,385.00									
Staff Training & Workshop		2,17,386.00									
K.H.W.S.		2,66,672.00									
Building Maintenance		28,58,248.00									
Electrical Maintenance		1,55,249.00									
Repairs & Maintenance General		42,268.00									
Generator Fuel & Maintenance		1,08,446.00									
Maintenance of Computer & Photocopy Machine		1,01,683.00									
Annual Maintenance of Telephone & IT		92,924.00									
Vehicle Fuel & Oil		5,52,365.00									
Vehicle Insurance		3,51,431.00									
Vehicle maintenance		1,31,603.00									
Summer Camp		10,000.00									
Canteen Expenses		6,36,568.00									
Cooking Gas		2,14,470.00									
Dairy Expenses		3,66,530.00									
Farming & Gardening		4,500.00									
Aids & Appliances		8,09,362.00									
Therapy material		3,170.00									
Medical & Surgery Expenses		45,267.00									
Dispensary expenses		2,67,675.00									
Health Screening Camp (Out Reach)		13,258.00		3,46,88,543.84							
To OTHERS EXPENSES											
Audit Fee		39,000.00									
Internal Audit Fee		1,80,000.00									
Legal, Consultancy & Court Fees		41,534.00									
Communication/Telephone Charges		1,50,195.00									
House, Land & Water Tax		1,20,000.00									
Postage & Courier Expenses		2,200.00									
Printing & Stationery		2,09,633.00									
Travelling & Conveyance		1,36,567.00									
Electricity Expenses		14,80,017.00									
Celebrations & Festivals		8,515.00									
Office Consumable Items		69,398.00		24,37,059.00							
(B) GENERAL ACCOUNT						(B) GENERAL ACCOUNT					
To Advertisement Expenses		13,800.00				By HRTC INCOME					
To Affiliation Fee		93,000.00				D ED Hostel Fee		3,45,000.00			
To Legal & Consultancy Charges		37,816.00				D ED SE (CP) Course fee		14,70,000.00			
To Audit Fee		5,900.00				Printing (xerox)		11,135.00		18,26,135.00	
To Internal Audit Fees		36,000.00									
To Bank Charges		2,362.95				By Donation K.F.				1,05,274.00	
To Communication / Telephone Expenses		76,166.00				By Donation 80 G				7,23,069.00	
To House Tax, Land TAX		78,197.00				By Donation From Autom Tech.				8,159.62	
To News Paper & Magazine		19,163.00				By Donation from Geberit Pvt.Ltd.				3,00,000.00	
To Postage & Courier		11,586.00				By Donation General				1,63,447.05	
To Printing & Stationery		46,848.00				By Donation PCCU				86,830.00	
To Electricity Expenses		69,498.00				By Income From School				9,61,477.28	
To Celebration & Festival		69,382.00				By Income from Appliances				6,75,264.00	
To Travelling & Conveyance		72,171.00				By Income From Art & Design, Grihini				2,92,569.00	
To Office Consumable Store		99,406.00				By Income From Bakery				6,21,339.00	
To Salary		18,32,585.00				By Income from Canteen				97,325.00	
To Remuneration		5,51,184.00				By Income from Coffee Shop				3,88,092.00	
To Provident Fund		42,668.00				By Income from Dairy & Farming				23,688.00	
To Gratuity		1,59,672.00				By Income From F.P.				88,715.50	
To Kiran Friends		7,459.00				By Income from Fooding & Lodging				1,13,926.00	
To Staff Welfare, Meeting & Guest Exp		51,812.00				By Income From IQ & Carpentry				2,28,356.50	
To Staff Training/workshop/seminar		43,547.99				By Income from Mothers Training				24,050.00	



To Building Maintenance, Geberit & Housing	1,98,966.00	By Income From Scrap Material	57,021.00
To Electrical Repair & M.	55,755.00	By Society Members Fee	1,900.00
To Generator Fuel & Maintenance	55,518.00		
To Repair & Maint. General	36,815.00	By BANK INTEREST	
To Computer & Xerox Maintenance	87,358.00	Interest on Bank A/c	4,343.00
To Vehicle Repair & Maintenance	2,68,570.00	Interest on FFD	79,605.00
To Vehicle Insurance	39,628.00	Interest on FDR	7,85,592.00
To Vehicle Fuel	1,73,697.00	Interest on income tax refund	24,715.00
To School Uniform	22,184.00		8,94,255.00
To Tuition Fee	10,500.00		
To Examination Fee	77,840.00	By PROJECT FUND INCOME	
To Summer Camp	34,041.00	BIOCON PVT LTD FUND	25,00,000.00
To Student Welfare	1,83,371.00	GIVE INDIA PROJECT FUND	11,74,687.00
To Picnic/Creative Activities	940.00	KHWS FUND	8,706.00
To Exposure Visit	7,352.00	Kiran St E & E	5,00,000.00
To Canteen Expenses	5,35,809.00	Ganesh Project	1,010.00
To Dairy Farm Exp.	2,61,988.00		41,84,403.00
To Hostel Expenses	54,773.00	By Excess of Expenditure over income transferred to	
To Cooking Gas	1,01,446.00	Capital fund	1,26,17,485.13
To Farming & Gardening	29,078.00	Project Fund (F.C.A/c)	51,69,379.35
To Linen & Bedding	11,318.00		1,77,86,864.48
To Aids & Appliances	2,27,501.00		
To Dispensary Expenses	34,739.00		
To Raw Material(IQ, Carpentry)	43,898.00		
To Raw Material Skill Training(Art & Design)	29,914.00		
To Raw Material Bakery	8,007.00		
To Raw Material Coffee Shop	3,345.00		
To Stipend	3,53,940.00		
To Suryoday Repairs	75,163.00		
To PROJECT FUND EXPENSES			
BIOCON PVT LTD FUND	25,00,000.00		
KHWS FUND	2,67,921.00		
Kiran St E & E	7,01,102.00		
	34,69,023.00		
To Depreciation on Fixed Assets	66,58,886.00		
To Excess of Income over Expenditure transferred to			
Capital fund			
Project Fund (General A/c)	7,15,380.00		
	7,15,380.00		
TOTAL Rs.	7,55,80,461.13	TOTAL Rs.	7,55,80,461.13

PLACE : LUCKNOW
DATE :25.09.2020

AUDITOR'S REPORT
"As Per Separate Report Even Date"

CHARTERED ACCOUNTANTS
AUDITOR'S



S. TULI & Co.
CHARTERED ACCOUNTANTS,
8-HALWASIA COURT,
HAZRATGANJ,
LUCKNOW.

KIRAN SOCIETY, KIRAN VILLAGE, MADHOPUR, P.O. KURUHAN, VARANASI (U.P.)

CONSOLIDATED BALANCE SHEET AS ON 31.03.2020

LIABILITIES	Rs.	P.	Rs.	P.	ASSETS	Rs.	P.	Rs.	P.
CAPITAL FUND					FIXED ASSETS				
Balance as on 01.04.2019	10,35,59,617.51				(At Cost Less Depreciation)				
Add: Project assets Capitalized during the year	56,14,345.00				(As per Schedule)			6,74,74,218.00	
Less: Excess of Expenditure over income	1,26,17,485.13		9,65,56,477.38		LIVE STOCK				
					Balance as on 01.04.2019			39,700.00	
CORPUS FUND					CURRENT ASSETS				
Balance as on 01.04.2019			64,35,800.00		Stamp Paper for Land				
PROJECT FUND F.C.A/C (As per List)					Balance as on 01.04.2019			1,11,000.00	
Balance as 01.04.2019	61,73,452.52				INCOME TAX (TDS)				
Less: Excess of Expenditure over income	51,69,379.35		10,04,073.17		Balance as on 01.04.2019	6,84,643.42			
PROJECT FUND (GENERAL A/C (As per List))					Add: Deducted during the year	7,59,042.42			
Balance as 01.04.2019	11,76,770.00				Less: Refunded during the year	3,53,025.00		4,06,017.42	
Add: Excess of Income over Expenditure	7,15,380.00		18,92,150.00						
CURRENT LIABILITIES					By CLOSING BALANCES : (As on 31.03.2020)				
P.F Payable			2,66,756.00		(As per books of Accounts)				
					(i) FOREIGN CONTRIBUTION ACCOUNT				
					(As per books of Accounts)				
					Cash in Hand	2,290.00			
					Cash in Hand (SOIR-IM)	16,354.00			
					With U.B.I. S.B. / Flexi fix A/c No. 304002010008741	2,81,681.67			
					With U.B.I. S.B. A/c No. 399402010947008	2,80,841.17			
					F.D.R With Education Department (As per List)	3,500.00			
					Cash Certificates With U.B.I. (As per List)	1,92,73,582.00			
					N.S.C With Post Office (As per List)	10,000.00			
					Accrued Interest on FDR's (As per list)	25,87,962.00		2,24,56,210.84	
					(ii) GENERAL ACCOUNT				
					Cash in Hand	76,418.00			
					With U.B.I. S.B. A/c & Flexi Fixed A/c No. 5516	8,37,172.83			
					With B.O.B. C/A No. 1885 (Suryoday)	9,322.50			
					With U.B.I. S.B. A/c No. 399402010948602	2,61,479.96			
					HDFC Bank S.B. A/c 50200009741351	1,45,274.00			
					Cash Certificate With U.B.I. (As per List)	1,30,34,817.00			
					Accrued Interest on FDR's (As per list)	13,03,626.00		1,56,68,110.29	
TOTAL Rs.			10,61,55,256.55		TOTAL Rs.			10,61,55,256.55	

PLACE : LUCKNOW
DATE :25.09.2020

AUDITOR'S REPORT
"As Per Separate Report Even Date"

CHARTERED ACCOUNTANTS
AUDITORS



*Help us to keep these
beautiful smiles intact*

YOU CAN

- Sponsor a child
- Donate through Give India
- Donate through our website

Registered address
Village Madhopur,
Post Office: Kuruhuan
Varanasi – 221011,
Uttar Pradesh, India

Phone : + 91-7571010009
e-mail : mail@kiranvillage.org
Website: www.kiranvillage.org

Postal address
B 30/1D, Ganga Bagh Colony
Lanka, Varanasi- 221005,
Uttar Pradesh, India